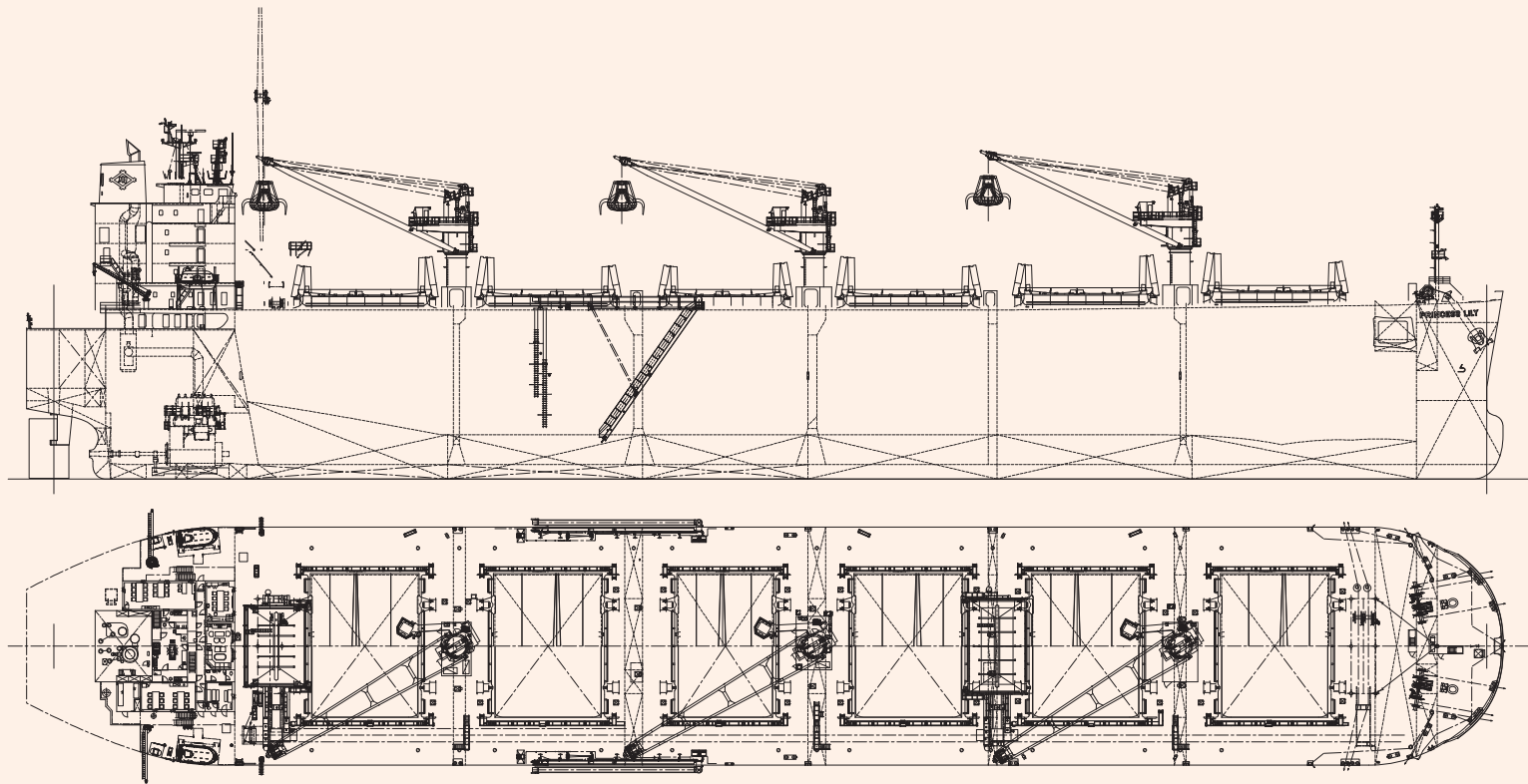


PRINCESS LILY 49,396 DWT Chip Carrier 77

☐ Contents ☐ By Builder ☐ By Ship Type



PRINCESS LILY 49,396 DWT Chip Carrier 77



PRINCIPAL PARTICULARS

Length (o.a.)	199.96 m	Main engine	MITSUI-MAN B&W 6S50ME-B9.3
Breadth (mld.)	32.24 m	MCR (kw \times min ⁻¹)	7,260 kW \times 99.0 min ⁻¹
Depth (mld.)	22.90 m	Speed (service)	abt. 14.5 knots
Draft (ext.)	11.577 m (Summer draft)	Complement	25 Persons
Gross tonnage	41,471	Classification	NIPPON KAIJI KYOKAI (NK)
Deadweight	49,396 MT	Builder	Iwagi Zosen Co., Ltd.

GROVE ISLAND 49,999 DWT Wood Chip Carrier 78

☐ Contents ☐ By Builder ☒ By Ship Type



GROVE ISLAND 49,999 DWT Wood Chip Carrier 78

Oshima Shipbuilding Co., Ltd. delivered GROVE ISLAND, a 3,616,756 cub. ft Wood Chip carrier, to AMBITIOUS LINE, S.A. in June 2020.

Features

- 1. Specially designed vessel to carry wood chips.
- 2. This vessel has large cargo hold for wooden chip loading and its self-unloading system with three electric deck cranes, four hoppers and conveyor systems achieves, four hoppers and conveyor systems achieves high unloading efficiency.
- 3. To prevent chip scattering, anti-scattering nets and water

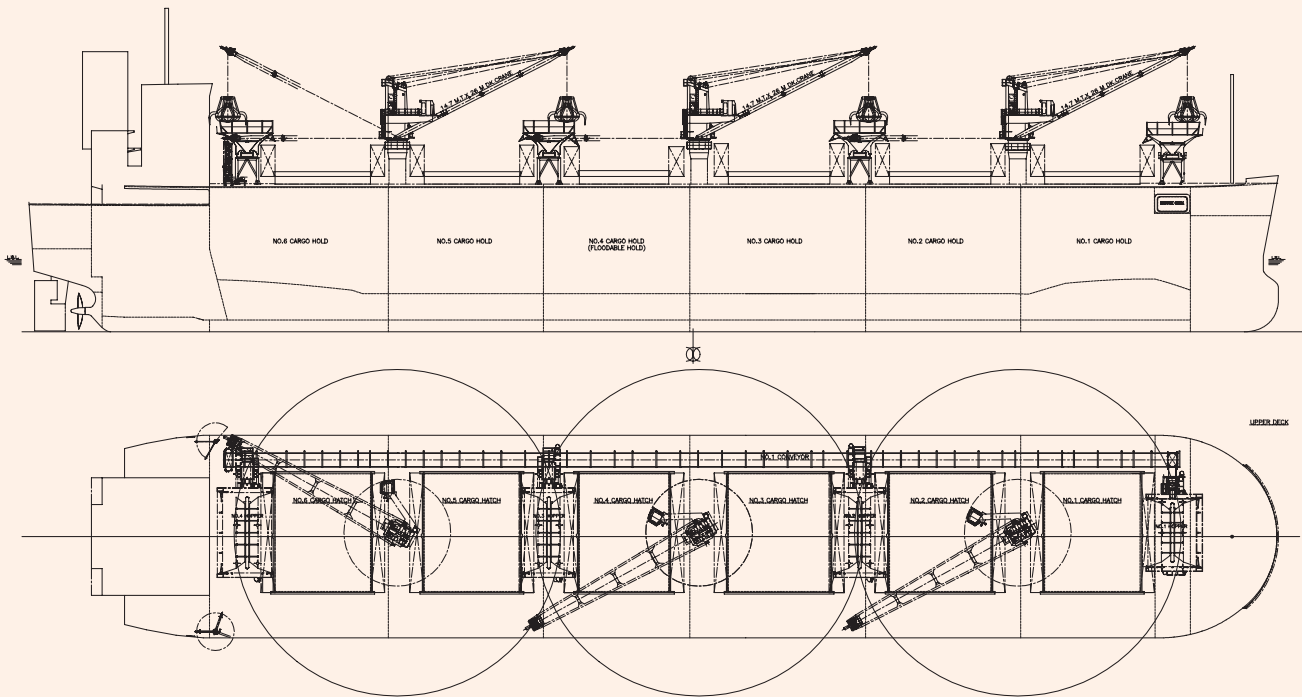
- spraying system are equipped at hopper.
- 4. Advanced Flipper Fins & Rudder Fin which improve propulsion efficiency are installed.

- 5. Special bow form, Seaworthy Bow improves speed performance in rough sea conditions as compared to ordinary bows.

PRINCIPAL PARTICULARS

Length (o.a.)	199.99 m
Breadth (mld.)	32.26 m
Depth (mld.)	22.98 m
Draft (mld.)	11.49 m
Gross tonnage	41838
Deadweight	49,999 MT

Main engine	J-ENG 6UEC50LSH-Eco-C2
MCR (kw×rpm)	7,210 kW × 99.0 rpm
Speed (service)	14.40 knots
Complement	25
Classification	NK
Loading capacity (grain)	102,415 m³
Builder	Oshima Shipbuilding Co., Ltd.



KEN ANN 36,644 DWT Bulk Carrier 79

☐ Contents ☐ By Builder ☒ By Ship Type



KEN ANN 36,644 DWT Bulk Carrier 79

Oshima Shipbuilding Co., Ltd. delivered KEN ANN, a 36,644-DWT bulk carrier, to DELICA SHIPPING S.A. in November 2019.

Features

- 1. For unitized cargo and easy cargo handling, this vessel has box shaped cargo hold.
- 2. This vessel to be able to carry log and packaged lumber in cargo holds, on upper deck in way of cargo hold part and on hatch covers.
- 3. Advanced Flipper Fins & Rudder Fin which improve propulsion efficiency are installed.

4. Special bow form, Seaworthy Bow improves speed performance in rough sea conditions as compared to

ordinary bows.
5. Dangerous cargoes also can be loaded in cargo hold.

PRINCIPAL PARTICULARS

Length (o.a.)	179.99 m
Breadth (mld.)	30.00 m
Depth (mld.)	14.63 m
Draft (mld.)	10.310 m
Gross tonnage	22745
Deadweight	36,644 MT

Main engine	MITSUI-MAN B&W 5S50ME-C8.5
MCR (kw×rpm)	5,650 kW × 108.0 rpm
Speed (service)	14.00 knots
Complement	25
Classification	ABS
Loading capacity (grain)	47,044 m³
Builder	Oshima Shipbuilding Co., Ltd.

